




# ESCAPE SERIES

## ODYSSEY 90" X 90"

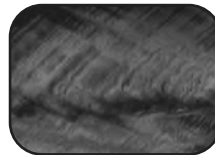
<b>SEATING</b>	5-7 Adults (Retreat whirl-pool, bench, bucket and lounge seating)
<b>DIMENSIONS</b>	90" x 90" x 38"
<b>DRY WEIGHT</b>	1100 lbs
<b>WATER CAPACITY</b>	525 - 550 gallons
<b>HYDROTHERAPY JETS</b>	14 Duo-Tone; Graphite Gray Jets 
<b>DIGITAL CONTROLS</b>	Top side control with digital read out.
<b>LIGHTING</b>	4" Underwater LED
<b>WATERFALL</b>	Optional
<b>ICEBUCKET</b>	Optional
<b>SHELL</b>	ABS backed Acrylic Shell with Acrylobond substructure.
<b>SURROUND CABINET</b>	Highwood: Gray, Brown, Mahogany or Tan
<b>INSULATION</b>	Five Stage Arctic Seal
<b>ELECTRICAL</b>	220 volt 50 amp
<b>PUMPS</b>	2.0 Horsepower, 56 frame, 2-speed, 220 volts and 1/15 horsepower circulation pumps.
<b>HEATER</b>	5.5kw, stainless steel, with flow through housing.
<b>FILTER</b>	50 square foot with telescopic filter basket.
<b>OZONATOR</b>	Ozone water purification system, corona discharge standard.
<b>PILLOWS</b>	Standard
<b>WARRANTY</b>	5 year shell. 1 year no fault.
<b>COVER</b>	UL Approved Safety Cover



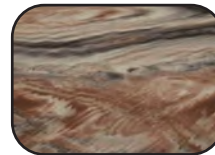
### SHELL COLOR OPTIONS



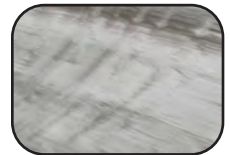
Silver Birch



Storm Cloud



Tuscan Sun



Glacier Mountain



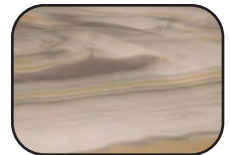
Pacific Rim



Alabaster Wave



Sahara



Smoky Mountain

### SKIRT COLOR OPTIONS



Gray



Brown



Mahogany



Tan

## ESCAPE SERIES - ODYSSEY

Seating: 5-7 Adults (Retreat whirlpool, bench, and bucket seating)  
 Water Capacity: 525 - 550 gallons  
 Dry Weight: 1100 lbs  
 Hydrotherapy Jets: 14 Stainless Steel; Graphite Gray Jets  
 Digital Controls: Top Side control with digital readout with 4 button and 1 button auxiliary controls. Lighting: Underwater 4" LED Light  
 Waterfall: Optional  
 Ice Bucket: Optional  
 Shell: ABS backed Acrylic Shell with Acrylobond substructure.  
 Surround Cabinet: Highwood: Redwood, Gray, Brown, Mahogany or Tan  
 Insulation: Five Stage Arctic Seal  
 Electrical: 220 volt 50 amp  
 Pumps: 2.0 Horsepower, 56 frame, 2-speed, 220 volts and 1/15 horsepower circulation pumps.  
 Heater: 5.5kw, stainless steel, with flow through housing.  
 Filter: 50 square foot with telescopic filter basket.  
 Ozonator: Ozone water purification system, corona discharge standard.  
 Pillows: Standard  
 Warranty: 5 year shell. 3 year no fault.  
 Cover: UL Approved Safety Cover

