




STORM SERIES

TWISTER 78" X 78"

SEATING	4-5 Adults (Bench, bucket and lounge seating)
DIMENSIONS	78" X 78" X 38"
DRY WEIGHT	850 lbs
WATER CAPACITY	350 - 375 gallon ^e
HYDROTHERAPY JETS	62 Stainless Steel; Graphite Gray Jets 
DIGITAL CONTROLS	Top Side control with digital readout, with 4 button and 1 button auxiliary controls.
LIGHTING	2 - Underwater 4" LED Lights, Constellation Lighting, Chromazon3 Lighting and Starburst Air Controls
WATERFALL	8" LED Waterfall
ICEBUCKET	None
SHELL	ABS backed Acrylic Shell with Acrylobond substructure.
SURROUND CABINET	Highwood: Redwood, Gray, Brown, Mahogany or Tan
INSULATION	Five Stage Arctic Seal
ELECTRICAL	220 volt 50 amp
PUMPS	2 - 4.0 Horsepower, 56 frame, 2-speed, 220 volts and 1/15 horsepower circulation pumps.
HEATER	5.5kw, stainless steel, with flow through housing.
FILTER	50 square foot with telescopic filter basket.
OZONATOR	Ozone water purification system, corona discharge standard.
PILLOWS	Standard
WARRANTY	5 year shell. 3 year no fault.
COVER	UL Approved Safety Cover



SHELL COLOR OPTIONS



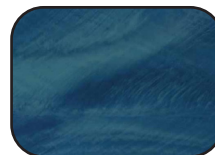
Cameo



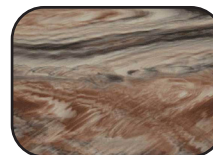
Gray Quartz



Sahara



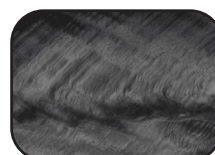
Pacific Rim



Tuscan Sun



Smoky Mountain



Storm Cloud

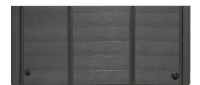


Sterling Silver

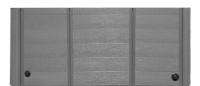


Alabaster Wave

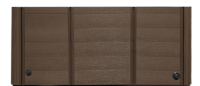
CABINET COLORS



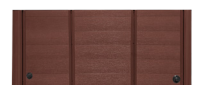
Charcoal



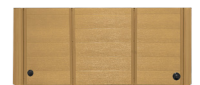
Smoke



Teak



Sequoia



Toffee



STORM SERIES - TWISTER

Seating: 4-5 Adults (Bench, Bucket and Lounge)
Water Capacity: 350 - 375 gallons
Dry Weight: 850 lbs
Hydrotherapy Jets: 62 Stainless Steel; Graphite Gray Jets
Digital Controls: Top Side control with digital readout with 4 button and 1 button auxiliary controls.
Lighting: 2 - Underwater 4" LED Lights, Constellation Lighting, Chromazon3 Lighting and Starburst Air
Controls Waterfall: 8" LED Waterfall
Ice Bucket: None
Shell: ABS backed Acrylic Shell with Acrylobond substructure.
Surround Cabinet: Highwood: Redwood, Gray, Brown, Mahogany or Tan
Insulation: Five Stage Arctic Seal
Electrical: 220 volt 50 amp
Pumps: 2 - 4.0 Horsepower, 56 frame, 2-speed, 220 volts and 1/15 horsepower circulation pumps.
Heater: 5.5kw, stainless steel, with flow through housing.
Filter: 50 square foot with telescopic filter basket.
Ozonator: Ozone water purification system, corona discharge standard.
Pillows: Standard
Warranty: 5 year shell. 3 year no fault.
Cover: UL Approved Safety Cover

