




## ESCAPE SERIES

### TREK 59" X 82"

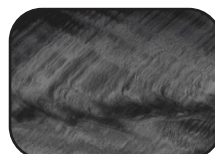


|                          |  |
|--------------------------|--|
| <b>SEATING</b>           | 4-5 Adults (Bench, bucket and lounge seating)  |
| <b>DIMENSIONS</b>        | 59" x 82" x 38" (Fits through most exterior doorways)  |
| <b>DRY WEIGHT</b>        | 750 lbs  |
| <b>WATER CAPACITY</b>    | 260 - 310 gallons  |
| <b>HYDROTHERAPY JETS</b> | 14<br>Duo-Tone;<br>Graphite Gray<br>Jets  |
| <b>DIGITAL CONTROLS</b>  | Top side control with digital read out.  |
| <b>LIGHTING</b>          | 4" Underwater LED  |
| <b>WATERFALL</b>         | Optional   |
| <b>ICEBUCKET</b>         | None   |
| <b>SHELL</b>             | ABS backed Acrylic Shell with Acrylobond substructure.   |
| <b>SURROUND CABINET</b>  | Highwood: Redwood, Gray, Brown, Mahogany or Tan  |
| <b>INSULATION</b>        | Five Stage Arctic Seal   |
| <b>ELECTRICAL</b>        | 220 volt 50 amp  |
| <b>PUMPS</b>             | 2.0 Horsepower, 56 frame, 2-speed, 220 volts and 1/15 horsepower circulation pumps.  |
| <b>HEATER</b>            | 5.5kw, stainless steel, with flow through housing.   |
| <b>FILTER</b>            | 50 square foot with telescopic filter basket.  |
| <b>OZONATOR</b>          | Ozone water purification system, corona discharge standard.  |
| <b>PILLOWS</b>           | Standard   |
| <b>WARRANTY</b>          | 5 year shell.<br>1 year no fault.  |
| <b>COVER</b>             | UL Approved Safety Cover   |

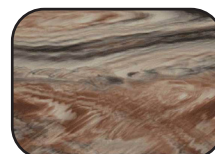
#### SHELL COLOR OPTIONS



Champagne Dreams



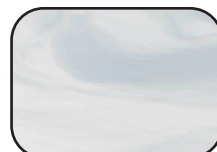
Storm Cloud



Tuscan Sun



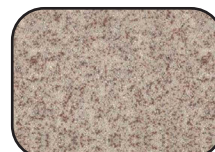
Glacier Mountain



Whispy Blue



Venetian Blue



Sahara



Smoky Mountain

#### SKIRT COLOR OPTIONS



Redwood



Gray



Brown



Mahogany



Tan



## ESCAPE SERIES - TREK

Seating: 4-5 Adults (Bench, bucket and lounge seating)  
Water Capacity: 260 - 310 gallons  
Dry Weight: 750 lbs  
Hydrotherapy Jets: 14 Duo-Tone; Graphite Gray Jets  
Digital Controls: Top Side control with digital readout and 4 button auxiliary control.  
Lighting: 4" Underwater LED Light  
Waterfall: Optional  
Ice Bucket: None  
Shell: ABS backed Acrylic Shell with Acrylobond substructure.  
Surround Cabinet: Highwood: Redwood, Gray, Brown, Mahogany or Tan  
Insulation: Five Stage Arctic Seal  
Electrical: 220 volt 50 amp  
Pumps: 2.0 Horsepower, 56 frame, 2-speed, 220 volts and 1/15 horsepower circulation pumps.  
Heater: 5.5kw, stainless steel, with flow through housing.  
Filter: 50 square foot with telescopic filter basket.  
Ozonator: Ozone water purification system, corona discharge standard.  
Pillows: Standard  
Warranty: 5 year shell. 3 year no fault.  
Cover: UL Approved Safety Cover

