




RESORT SERIES

SNOWMASS

89" X 89"

SEATING	5-7 Adults (Retreat whirlpool, bench, bucket and lounge seating)
DIMENSIONS	89" x 89" x 37 3/4"
DRY WEIGHT	1050 lbs
WATER CAPACITY	525 - 550 gallons
HYDROTHERAPY JETS	48 Accent Stainless Steel; Graphite Gray Jets 
DIGITAL CONTROLS	Top side control with digital readout and 4 button auxiliary control.
LIGHTING	2 - Underwater 4" LED Lights and Constellation Lighting
WATERFALL	8" LED Waterfall
ICEBUCKET	LED Ice Bucket
SHELL	ABS backed Acrylic Shell with Acrylobond substructure.
SURROUND CABINET	Highwood: Redwood, Gray, Brown, Mahogany or Tan
INSULATION	Five Stage Arctic Seal
ELECTRICAL	220 volt 50 amp
PUMPS	2 - 3.0 Horsepower, 56 frame, 2-speed, 220 volts and 1/15 horsepower circulation pumps.
HEATER	5.5kw, stainless steel, with flow through housing.
FILTER	50 square foot with telescopic filter basket.
OZONATOR	Ozone water purification system, corona discharge standard.
PILLOWS	Standard
WARRANTY	5 year shell. 3 year no fault.
COVER	UL Approved Safety Cover



SHELL COLOR OPTIONS



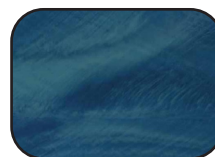
Cameo



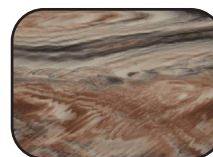
Gray Quartz



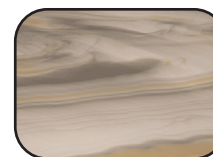
Sahara



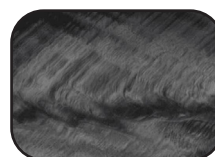
Pacific Rim



Tuscan Sun



Smoky Mountain



Storm Cloud

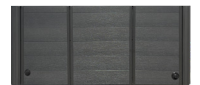


Sterling Silver

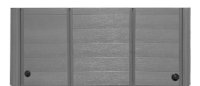


Alabaster Wave

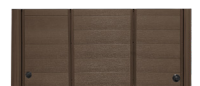
CABINET COLORS



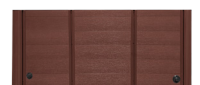
Charcoal



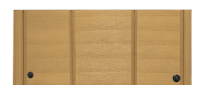
Smoke



Teak



Sequoia



Toffee



RESORT SERIES - SNOWMASS

Seating: 5-7 Adults (Retreat whirlpool, bench, bucket and lounge seating)
Water Capacity: 525 - 550 gallons
Dry Weight: 1050 lbs
Hydrotherapy Jets: 48 Stainless Steel; Graphite Gray Jets
Digital Controls: Top Side control with digital readout with 4 button and 1 button auxiliary controls.
Lighting: 2 - Underwater 4" LED Lights, Constellation Lighting
Waterfall: 8" LED Waterfall
Ice Bucket: LED Ice Bucket
Shell: ABS backed Acrylic Shell with Acrylobond substructure.
Surround Cabinet: Highwood: Redwood, Gray, Brown, Mahogany or Tan
Insulation: Five Stage Arctic Seal
Electrical: 220 volt 50 amp
Pumps: 2 - 3.0 Horsepower, 56 frame, 2-speed, 220 volts and 1/15 horsepower circulation pumps.
Heater: 5.5kw, stainless steel, with flow through housing.
Filter: 50 square foot with telescopic filter basket.
Ozonator: Ozone water purification system, corona discharge standard.
Pillows: Standard
Warranty: 5 year shell. 3 year no fault.
Cover: UL Approved Safety Cover

