




## ESCAPE SERIES

### PASSAGE

59" X 82"



<b>SEATING</b>	2-3 Adults (2-way lounge and bucket seat)
<b>DIMENSIONS</b>	59" x 82" x 38" (Fits through most exterior doorways)
<b>DRY WEIGHT</b>	700 lbs
<b>WATER CAPACITY</b>	260 - 310 gallons
<b>HYDROTHERAPY JETS</b>	14 Duo-Tone; Graphite Gray Jets 
<b>DIGITAL CONTROLS</b>	Top side control with digital read out.
<b>LIGHTING</b>	4" Underwater LED
<b>WATERFALL</b>	Optional
<b>ICEBUCKET</b>	None
<b>SHELL</b>	ABS backed Acrylic Shell with Acrylobond substructure.
<b>SURROUND CABINET</b>	Highwood: Redwood, Gray, Brown, Mahogany or Tan
<b>INSULATION</b>	Five Stage Arctic Seal
<b>ELECTRICAL</b>	220 volt 50 amp
<b>PUMPS</b>	2.0 Horsepower, 56 frame, 2-speed, 220 volts and 1/15 horsepower circulation pumps.
<b>HEATER</b>	5.5kw, stainless steel, with flow through housing.
<b>FILTER</b>	50 square foot with telescopic filter basket.
<b>OZONATOR</b>	Ozone water purification system, corona discharge standard.
<b>PILLOWS</b>	Standard
<b>WARRANTY</b>	5 year shell. 1 year no fault.
<b>COVER</b>	UL Approved Safety Cover

#### SHELL COLOR OPTIONS



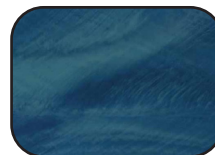
Cameo



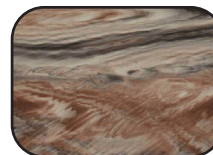
Gray Quartz



Sahara



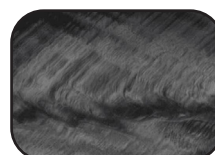
Pacific Rim



Tuscan Sun



Smoky Mountain



Storm Cloud

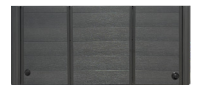


Sterling Silver

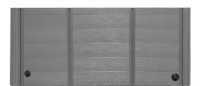


Alabaster Wave

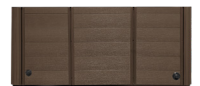
#### CABINET COLORS



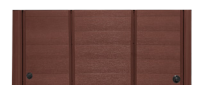
Charcoal



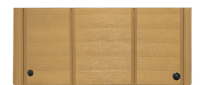
Smoke



Teak



Sequoia



Toffee



## ESCAPE SERIES - PASSAGE

Seating: 2-3 Adults (2-way, lounge, and bucket seating)  
Water Capacity: 260 - 310 gallons  
Dry Weight: 700 lbs  
Hydrotherapy Jets: 14 Duo-Tone; Graphite Gray Jets  
Digital Controls: Top Side control with digital readout and 1 button auxiliary control. Lighting: 4"  
Underwater LED Light  
Waterfall: Optional  
Ice Bucket: None  
Shell: ABS backed Acrylic Shell with Acrylobond substructure.  
Surround Cabinet: Highwood: Redwood, Gray, Brown, Mahogany or Tan  
Insulation: Five Stage Arctic Seal  
Electrical: 220 volt 50 amp  
Pumps: 2.0 Horsepower, 56 frame, 2-speed, 220 volts and 1/15 horsepower circulation pump.  
Heater: 5.5kw, stainless steel, with flow through housing.  
Filter: 50 square foot with telescopic filter basket.  
Ozonator: Ozone water purification system, corona discharge standard.  
Pillows: Standard  
Warranty: 5 year shell. 2 year no fault.  
Cover: UL Approved Safety Cover

