




ESCAPE SERIES

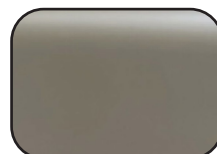
PASSAGE

59" X 82"

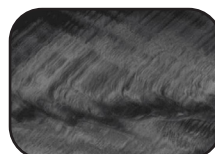


SEATING	2-3 Adults (2-way lounge and bucket seat)
DIMENSIONS	59" x 82" x 38" (Fits through most exterior doorways)
DRY WEIGHT	700 lbs
WATER CAPACITY	260 - 310 gallons
HYDROTHERAPY JETS	14 Duo-Tone; Graphite Gray Jets 
DIGITAL CONTROLS	Top side control with digital read out.
LIGHTING	4" Underwater LED
WATERFALL	Optional
ICEBUCKET	None
SHELL	ABS backed Acrylic Shell with Acrylobond substructure.
SURROUND CABINET	Highwood: Redwood, Gray, Brown, Mahogany or Tan
INSULATION	Five Stage Arctic Seal
ELECTRICAL	220 volt 50 amp
PUMPS	2.0 Horsepower, 56 frame, 2-speed, 220 volts and 1/15 horsepower circulation pumps.
HEATER	5.5kw, stainless steel, with flow through housing.
FILTER	50 square foot with telescopic filter basket.
OZONATOR	Ozone water purification system, corona discharge standard.
PILLOWS	Standard
WARRANTY	5 year shell. 1 year no fault.
COVER	UL Approved Safety Cover

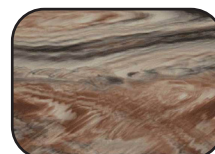
SHELL COLOR OPTIONS



Champagne Dreams



Storm Cloud



Tuscan Sun



Glacier Mountain



Whispy Blue



Venetian Blue



Sahara



Smoky Mountain

SKIRT COLOR OPTIONS



Redwood



Gray



Brown



Mahogany



Tan



ESCAPE SERIES - PASSAGE

Seating: 2-3 Adults (2-way, lounge, and bucket seating)
Water Capacity: 260 - 310 gallons
Dry Weight: 700 lbs
Hydrotherapy Jets: 14 Duo-Tone; Graphite Gray Jets
Digital Controls: Top Side control with digital readout and 1 button auxiliary control. Lighting: 4"
Underwater LED Light
Waterfall: Optional
Ice Bucket: None
Shell: ABS backed Acrylic Shell with Acrylobond substructure.
Surround Cabinet: Highwood: Redwood, Gray, Brown, Mahogany or Tan
Insulation: Five Stage Arctic Seal
Electrical: 220 volt 50 amp
Pumps: 2.0 Horsepower, 56 frame, 2-speed, 220 volts and 1/15 horsepower circulation pump.
Heater: 5.5kw, stainless steel, with flow through housing.
Filter: 50 square foot with telescopic filter basket.
Ozonator: Ozone water purification system, corona discharge standard.
Pillows: Standard
Warranty: 5 year shell. 2 year no fault.
Cover: UL Approved Safety Cover

