




STORM SERIES

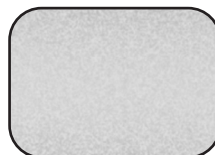
MONSOON

88" X 88"

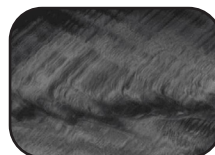
SEATING	5-7 Adults (Bench, and bucket seating)
DIMENSIONS	88" x 88" x 38"
DRY WEIGHT	1050 lbs
WATER CAPACITY	525 - 550 gallons
HYDROTHERAPY JETS	62 Stainless Steel; Graphite Gray Jets 
DIGITAL CONTROLS	Top Side control with digital readout, with 4 button and 1 button auxiliary controls.
LIGHTING	2 - Underwater 4" LED Lights, Constellation Lighting, Chromazon3 Lighting and Starburst Air Controls
WATERFALL	8" LED Waterfall
ICEBUCKET	LED Ice Bucket
SHELL	ABS backed Acrylic Shell with Acrylobond substructure.
SURROUND CABINET	Highwood: Redwood, Gray, Brown, Mahogany or Tan
INSULATION	Five Stage Arctic Seal
ELECTRICAL	220 volt 50 amp
PUMPS	2 - 4.0 Horsepower, 56 frame, 2-speed, 220 volts and 1/15 horsepower circulation pumps.
HEATER	5.5kw, stainless steel, with flow through housing.
FILTER	50 square foot with telescopic filter basket.
OZONATOR	Ozone water purification system, corona discharge standard.
PILLOWS	Standard
WARRANTY	5 year shell. 3 year no fault.
COVER	UL Approved Safety Cover



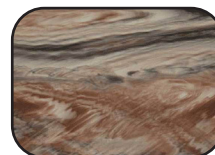
SHELL COLOR OPTIONS



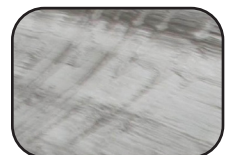
Silver Birch



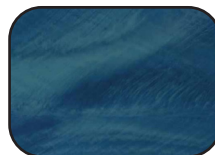
Storm Cloud



Tuscan Sun



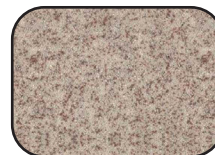
Sterling Silver



Pacific Rim



Alabaster Wave



Sahara



Smoky Mountain

SKIRT COLOR OPTIONS



Redwood



Gray



Brown



Mahogany



Tan



STORM SERIES - MONSOON

- Seating: 5-7 Adults (Bench, and Bucket seating)
- Water Capacity: 525 - 550 gallons
- Dry Weight: 1050 lbs
- Hydrotherapy Jets: 62 Stainless Steel; Graphite Gray Jets
- Digital Controls: Top Side control with digital readout with 4 button and 1 button auxiliary controls.
- Lighting: 2 - Underwater 4" LED Lights, Constellation Lighting, Chromazon3 Lighting and Starburst Air
- Controls Waterfall: 8" LED Waterfall
- Ice Bucket: LED Ice Bucket
- Shell: ABS backed Acrylic Shell with Acrylobond substructure.
- Surround Cabinet: Highwood: Redwood, Gray, Brown, Mahogany or Tan
- Insulation: Five Stage Arctic Seal
- Electrical: 220 volt 50 amp
- Pumps: 2 - 4.0 Horsepower, 56 frame, 2-speed, 220 volts and 1/15 horsepower circulation pumps.
- Heater: 5.5kw, stainless steel, with flow through housing.
- Filter: 50 square foot with telescopic filter basket.
- Ozonator: Ozone water purification system, corona discharge standard.
- Pillows: Standard
- Warranty: 5 year shell. 3 year no fault.
- Cover: UL Approved Safety Cover

