




## WILDERNESS SERIES

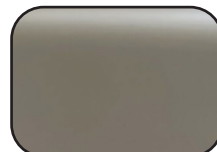
### CASCADE

89" X 89"

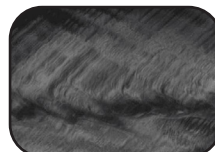
<b>SEATING</b>	5-7 Adults (Retreat whirl-pool, bench, bucket and lounge seating)
<b>DIMENSIONS</b>	89" x 89" x 37 3/4"
<b>DRY WEIGHT</b>	1050 lbs
<b>WATER CAPACITY</b>	525 - 550 gallons
<b>HYDROTHERAPY JETS</b>	34 Duo-Tone; Graphite Gray Jets 
<b>DIGITAL CONTROLS</b>	Top side control with digital readout and 4 button auxiliary control.
<b>LIGHTING</b>	2 - 4" Underwater LEDs
<b>WATERFALL</b>	8" LED Waterfall
<b>ICEBUCKET</b>	Optional
<b>SHELL</b>	ABS backed Acrylic Shell with Acrylobond substructure.
<b>SURROUND CABINET</b>	Highwood: Redwood, Gray, Brown, Mahogany or Tan
<b>INSULATION</b>	Five Stage Arctic Seal
<b>ELECTRICAL</b>	220 volt 50 amp
<b>PUMPS</b>	2 - 2.0 Horsepower, 56 frame, 2-speed, 220 volts and 1/15 horsepower circulation pumps.
<b>HEATER</b>	5.5kw, stainless steel, with flow through housing.
<b>FILTER</b>	50 square foot with telescopic filter basket.
<b>OZONATOR</b>	Ozone water purification system, corona discharge standard.
<b>PILLOWS</b>	Standard
<b>WARRANTY</b>	5 year shell. 3 year no fault.
<b>COVER</b>	UL Approved Safety Cover



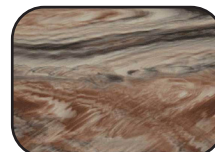
#### SHELL COLOR OPTIONS



Champagne Dreams



Storm Cloud



Tuscan Sun



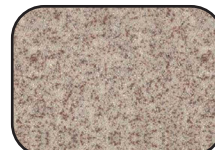
Glacier Mountain



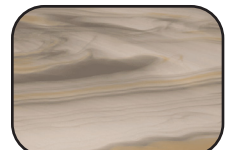
Whispy Blue



Venetian Blue



Sahara



Smoky Mountain

#### SKIRT COLOR OPTIONS



Redwood



Gray



Brown



Mahogany



Tan



## WILDERNESS SERIES - CASCADE

Seating: 5-7 Adults (Retreat whirlpool, bench, bucket and lounge seating)  
Water Capacity: 525 - 550 gallons  
Dry Weight: 1050 lbs  
Hydrotherapy Jets: 34 Stainless Steel; Graphite Gray Jets  
Digital Controls: Top Side control with digital readout with 4 button and 1 button auxiliary controls.  
Lighting: 2 - Underwater 4" LED Lights  
Waterfall: 8" LED Waterfall  
Ice Bucket: Optional  
Shell: ABS backed Acrylic Shell with Acrylobond substructure.  
Surround Cabinet: Highwood: Redwood, Gray, Brown, Mahogany or Tan  
Insulation: Five Stage Arctic Seal  
Electrical: 220 volt 50 amp  
Pumps: 2 - 2.0 Horsepower, 56 frame, 2-speed, 220 volts and 1/15 horsepower circulation pumps. Heater: 5.5kw, stainless steel, with flow through housing.  
Filter: 50 square foot with telescopic filter basket.  
Ozonator: Ozone water purification system, corona discharge standard.  
Pillows: Standard  
Warranty: 5 year shell. 3 year no fault.  
Cover: UL Approved Safety Cover

