




## RESORT SERIES

### BRECKENRIDGE

88" X 88"

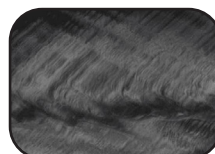
<b>SEATING</b>	5-7 Adults (Bench and bucket seating)
<b>DIMENSIONS</b>	88" x 88" x 38"
<b>DRY WEIGHT</b>	1050 lbs
<b>WATER CAPACITY</b>	525 - 550 gallons
<b>HYDROTHERAPY JETS</b>	48 Accent Stainless Steel; Graphite Gray Jets 
<b>DIGITAL CONTROLS</b>	Top side control with digital readout and 4 button auxiliary control.
<b>LIGHTING</b>	2 - Underwater 4" LED Lights and Constellation Lighting
<b>WATERFALL</b>	8" LED Waterfall
<b>ICEBUCKET</b>	LED Ice Bucket
<b>SHELL</b>	ABS backed Acrylic Shell with Acrylobond substructure.
<b>SURROUND CABINET</b>	Highwood: Redwood, Gray, Brown, Mahogany or Tan
<b>INSULATION</b>	Five Stage Arctic Seal
<b>ELECTRICAL</b>	220 volt 50 amp
<b>PUMPS</b>	2 - 3.0 Horsepower, 56 frame, 2-speed, 220 volts and 1/15 horsepower circulation pumps.
<b>HEATER</b>	5.5kw, stainless steel, with flow through housing.
<b>FILTER</b>	50 square foot with telescopic filter basket.
<b>OZONATOR</b>	Ozone water purification system, corona discharge standard.
<b>PILLOWS</b>	Standard
<b>WARRANTY</b>	5 year shell. 3 year no fault.
<b>COVER</b>	UL Approved Safety Cover



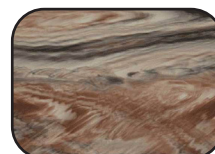
#### SHELL COLOR OPTIONS



Champagne Dreams



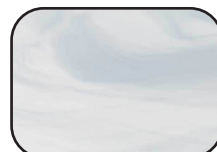
Storm Cloud



Tuscan Sun



Glacier Mountain



Whispy Blue



Venetian Blue



Sahara



Smoky Mountain

#### SKIRT COLOR OPTIONS



Redwood



Gray



Brown



Mahogany



Tan



## RESORT SERIES - BRECKENRIDGE

Seating: 5-7 Adults (Bench, and Bucket seating)

Water Capacity: 525 - 550 gallons

Dry Weight: 1050 lbs

Hydrotherapy Jets: 48 Stainless Steel; Graphite Gray Jets

Digital Controls: Top Side control with digital readout with 4 button and 1 button auxiliary controls.

Lighting: 2 - Underwater 4" LED Lights, Constellation Lighting

Waterfall: 8" LED Waterfall

Ice Bucket: LED Ice Bucket

Shell: ABS backed Acrylic Shell with Acrylobond substructure.

Surround Cabinet: Highwood: Redwood, Gray, Brown, Mahogany or Tan

Insulation: Five Stage Arctic Seal

Electrical: 220 volt 50 amp

Pumps: 2 - 3.0 Horsepower, 56 frame, 2-speed, 220 volts and 1/15 horsepower circulation pumps.

Heater: 5.5kw, stainless steel, with flow through housing.

Filter: 50 square foot with telescopic filter basket.

Ozonator: Ozone water purification system, corona discharge standard.

Pillows: Standard

Warranty: 5 year shell. 3 year no fault.

Cover: UL Approved Safety Cover

